

# STAMBENA GRADEVINA DUGO SELO - DS CENTAR

STAN BROJ 54



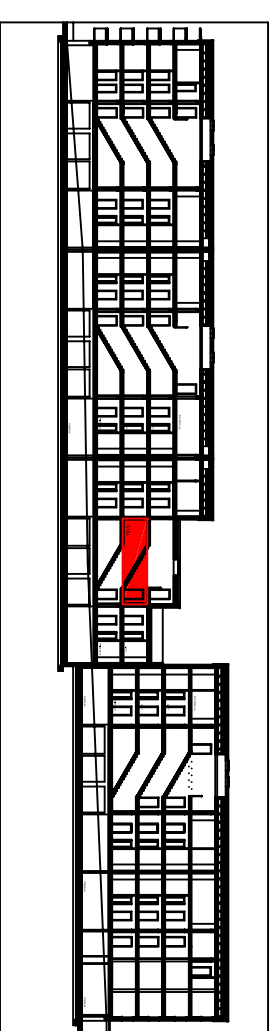
TIP 54

1. KAT

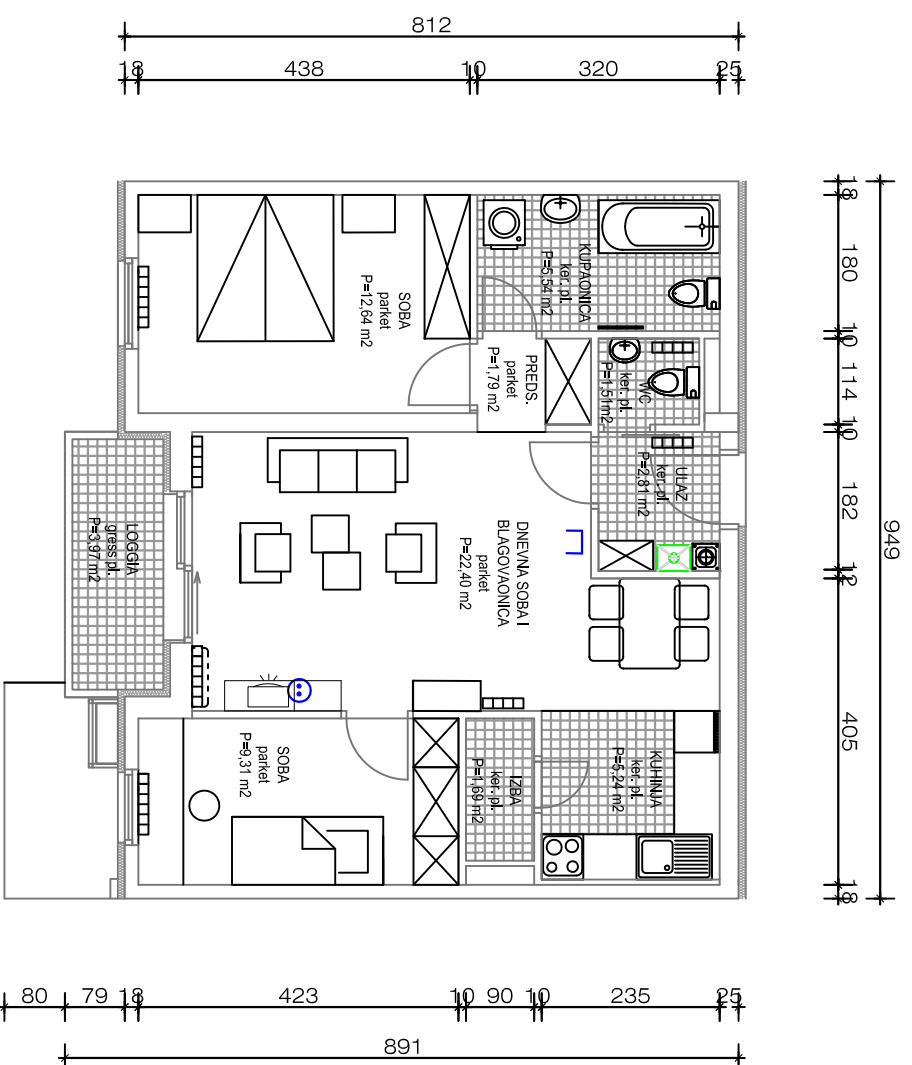
3 S

BROJ STANOVA 1

UZDUŽNI PRESJEK



1. KAT



prostorija	obrada površine	podna površina	koef.	netto korisna površina
ulaz	ker. ploč.	2,81 m <sup>2</sup>	1,0	2,81 m <sup>2</sup>
kupaonica	ker. ploč.	5,54 m <sup>2</sup>	1,0	5,54 m <sup>2</sup>
kuhinja	ker. ploč.	5,24 m <sup>2</sup>	1,0	5,24 m <sup>2</sup>
predsoblje	parket	1,79 m <sup>2</sup>	1,0	1,79 m <sup>2</sup>
dnevna soba i blag.	parket	22,40 m <sup>2</sup>	1,0	22,40 m <sup>2</sup>
wc	ker. ploč.	1,51 m <sup>2</sup>	1,0	1,51 m <sup>2</sup>
izba	ker. ploč.	1,69 m <sup>2</sup>	1,0	1,69 m <sup>2</sup>
soba	parket	9,31 m <sup>2</sup>	1,0	9,31 m <sup>2</sup>
soba	parket	12,64 m <sup>2</sup>	1,0	12,64 m <sup>2</sup>
POVRŠINA ZATVORENIH PROSTORA:				P=62,93 m <sup>2</sup>
loggia	gress. ploč.	3,97 m <sup>2</sup>	0,75	2,98 m <sup>2</sup>
UKUPNO POVRŠINA STANA:				P=65,91 m <sup>2</sup>
spremište	cem.glaz.	1,51 m <sup>2</sup>	0,75	1,13 m <sup>2</sup>
terasa	gress. ploč.	46,63 m <sup>2</sup>	0,25	11,66 m <sup>2</sup>
SVEUKUPNO:				P=78,70 m <sup>2</sup>