

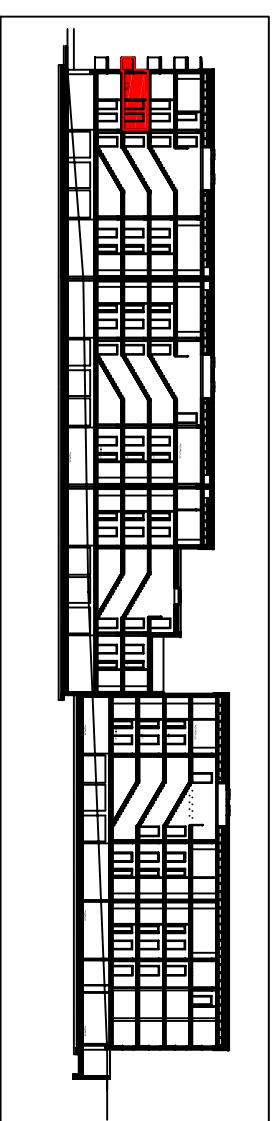
STAMBENA GRADEVINA DUGO SELO - DS CENTAR

STAN BROJ 6

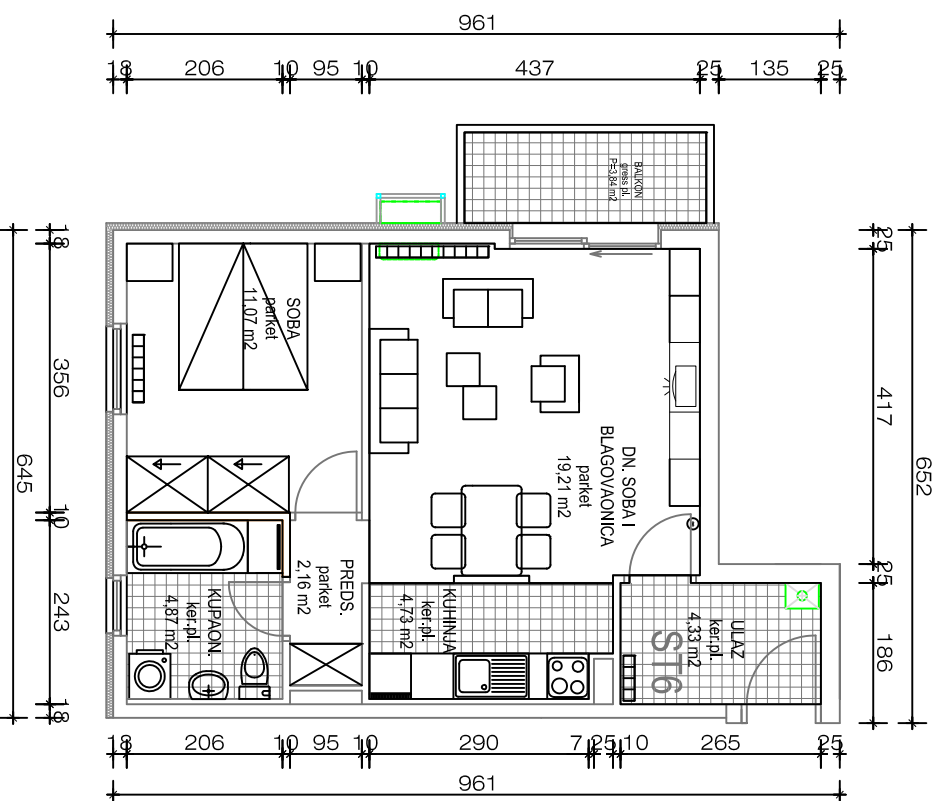
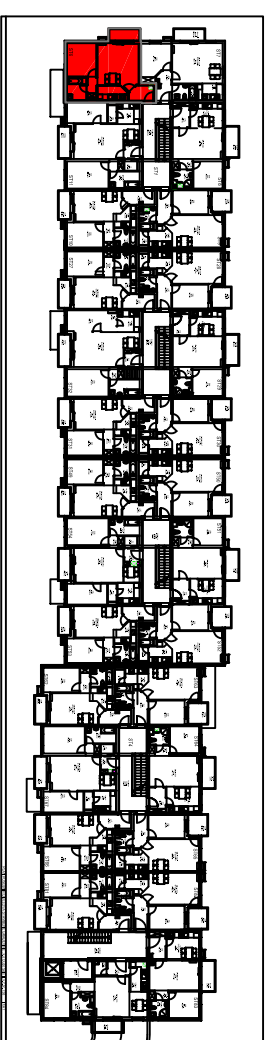


| | | | |
|-------|--------|-----|----------------|
| TIP 6 | 1. KAT | 2 S | BROJ STANOVA 1 |
|-------|--------|-----|----------------|

UZDUŽNI PRESJEK



1. KAT



| prostorija | obrada površine | podna površina | koef. | netto korisna površina |
|-------------------------------|-----------------|----------------------|-------|------------------------|
| ulaz | ker. ploč. | 4,33 m ² | 1,0 | 4,33 m ² |
| predsoblje | parket | 2,16 m ² | 1,0 | 2,16 m ² |
| kuhinja | ker. ploč. | 4,73 m ² | 1,0 | 4,73 m ² |
| dnevna soba + blagavaonica | parket | 19,21 m ² | 1,0 | 19,21 m ² |
| kupaonica | ker. ploč. | 4,87 m ² | 1,0 | 4,87 m ² |
| soba | parket | 11,07 m ² | 1,0 | 11,07 m ² |
| POVRŠINA ZATVORENIH PROSTORA: | | | | P=46,37 m ² |
| balkon | gress. ploč. | 3,84 m ² | 0,50 | 1,92 m ² |
| UKUPNO POVRŠINA STANA: | | | | P=48,29 m ² |
| spremište | cem. glaz. | 1,62 m ² | 0,75 | 1,22 m ² |
| parkirno mjesto | asfalt | 11,50 m ² | 0,25 | 2,88 m ² |
| SVEUKUPNO: | | | | P=52,39 m ² |