

STAN BROJ 4



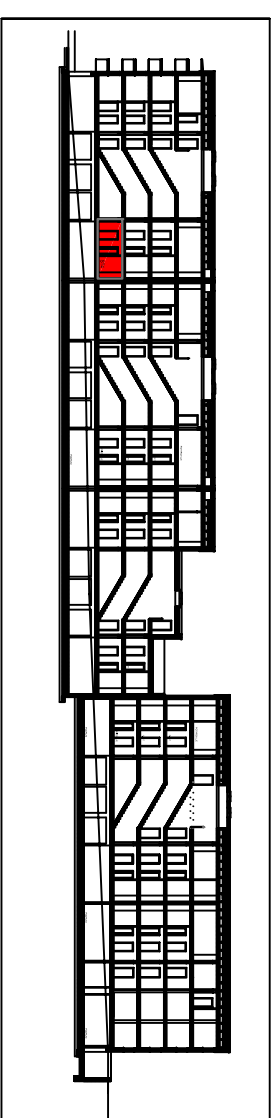
TIP 4

PRIZEMLJE

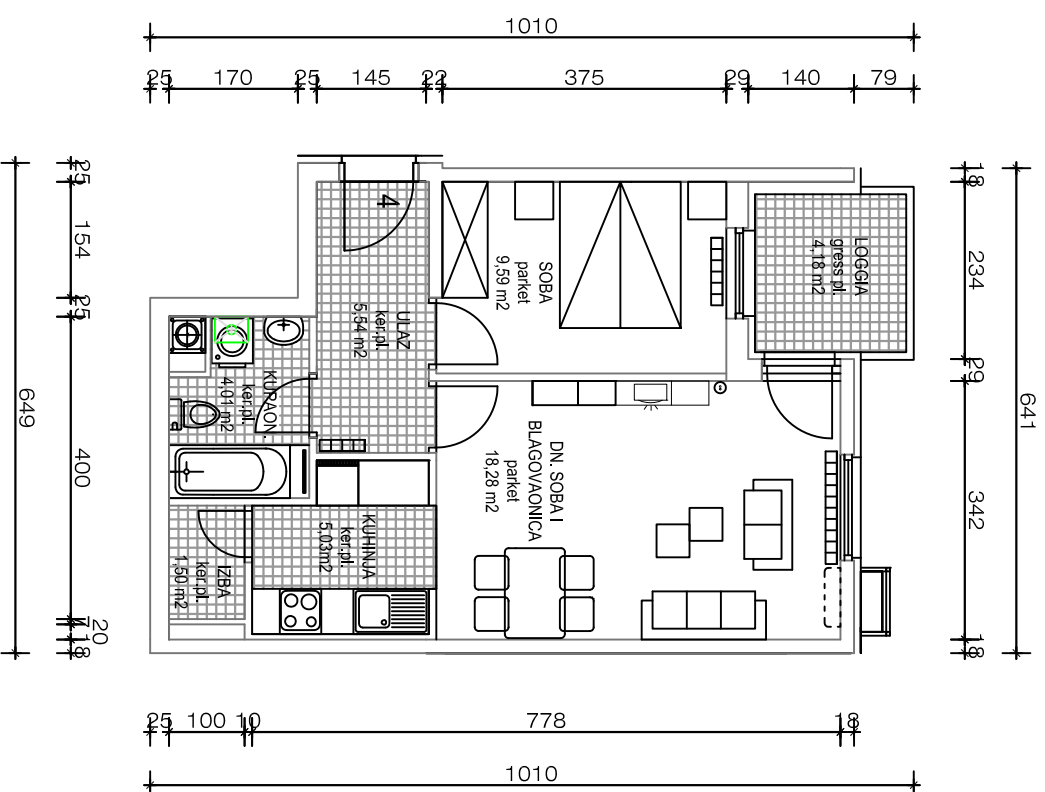
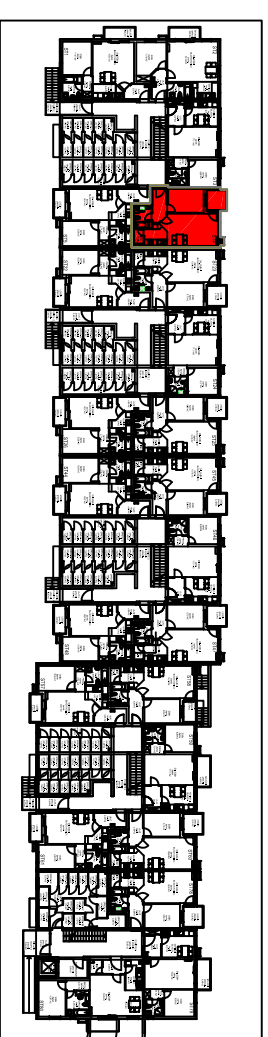
2 S

BROJ STANOVA 4

UZDUŽNI PRESJEK



PRIZEMLJE



| prostorija                    | obrada površine | podna površina       | koef. | netto korisna površina |
|-------------------------------|-----------------|----------------------|-------|------------------------|
| ulaz                          | ker. ploč.      | 5,54 m <sup>2</sup>  | 1,0   | 5,54 m <sup>2</sup>    |
| kupaonica                     | ker. ploč.      | 4,01 m <sup>2</sup>  | 1,0   | 4,01 m <sup>2</sup>    |
| kuhinja                       | ker. ploč.      | 5,03 m <sup>2</sup>  | 1,0   | 5,03 m <sup>2</sup>    |
| izba                          | ker. ploč.      | 1,50 m <sup>2</sup>  | 1,0   | 1,50 m <sup>2</sup>    |
| dnevna soba i blag.           | parket          | 18,28 m <sup>2</sup> | 1,0   | 18,28 m <sup>2</sup>   |
| soba                          | parket          | 9,59 m <sup>2</sup>  | 1,0   | 9,59 m <sup>2</sup>    |
| POVRŠINA ZATVORENIH PROSTORA: |                 |                      |       | P=43,95 m <sup>2</sup> |
| loggia                        | gress ploč.     | 4,18 m <sup>2</sup>  | 0,75  | 3,14 m <sup>2</sup>    |
| UKUPNO POVRŠINA STANA:        |                 |                      |       | P=47,09 m <sup>2</sup> |
| spremište                     | cem. glaz.      | 1,51 m <sup>2</sup>  | 0,75  | 1,13 m <sup>2</sup>    |
| parkiralište                  | asfalt          | 11,50 m <sup>2</sup> | 0,25  | 2,88 m <sup>2</sup>    |
| SVEUKUPNO:                    |                 |                      |       | P=51,10 m <sup>2</sup> |