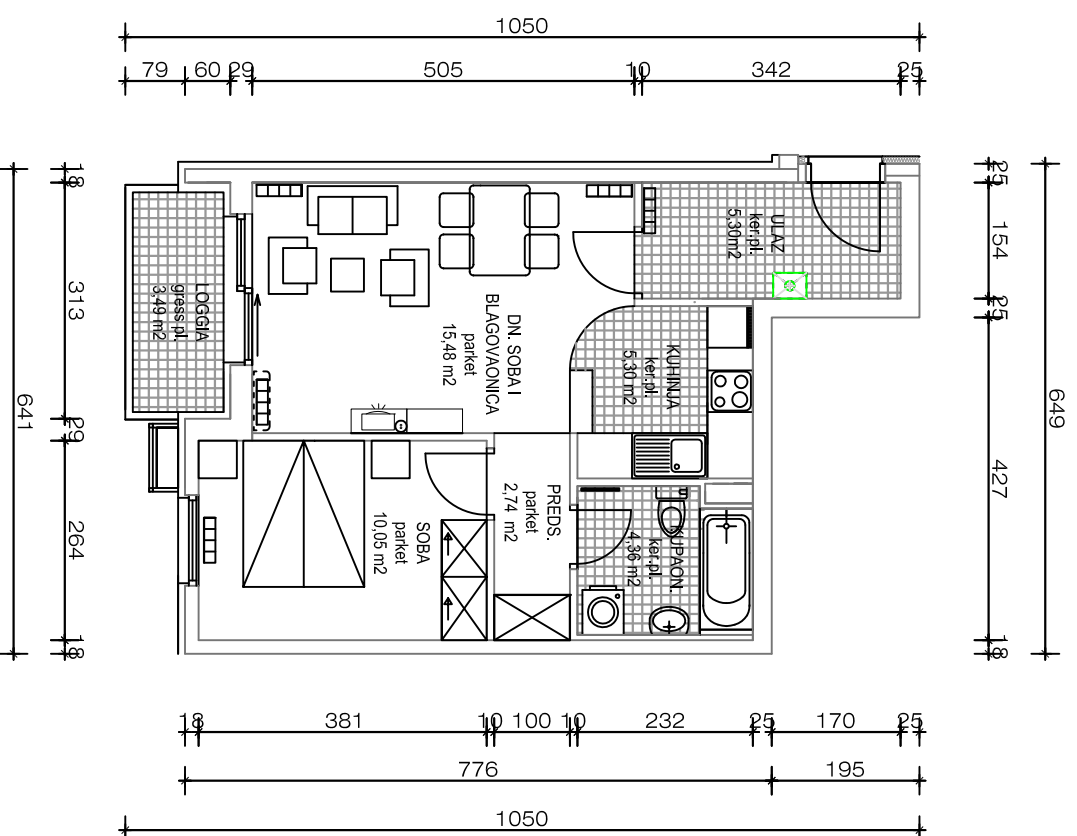


STAMBENA GRADEVINA DUGO SELO - DS CENTAR

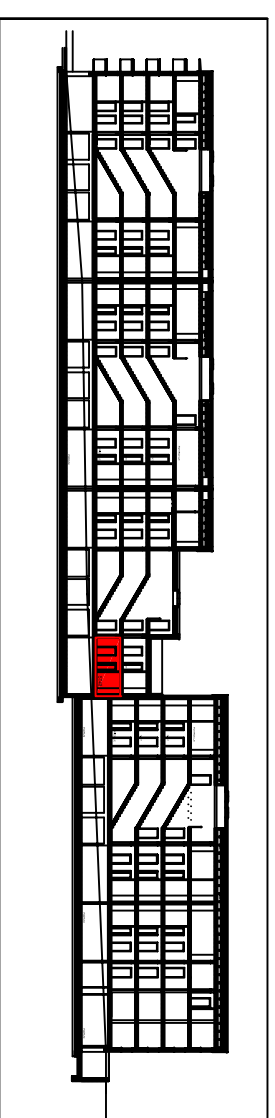
STAN BROJ 48



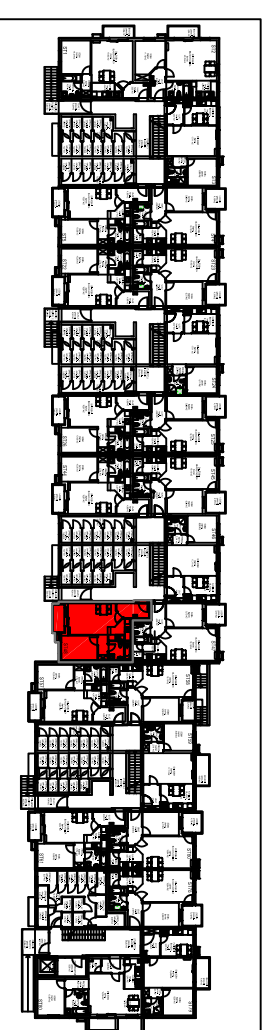
TIP 48	PRIZEMLJE	2 S	BROJ STANOVA 1
--------	-----------	-----	----------------



UZDUŽNI PRESJEK



PRIZEMLJE



prostorija	obrada površine	podna površina	koef.	netto korisna površina
ulaz	ker. ploč.	5,30 m ²	1,0	5,30 m ²
kupaonica	ker. ploč.	4,36 m ²	1,0	4,36 m ²
kuhinja	ker. ploč.	5,30 m ²	1,0	5,30 m ²
predsoblje	parket	2,74 m ²	1,0	2,74 m ²
dnevna soba i blag.	parket	15,48 m ²	1,0	15,48 m ²
soba	parket	10,05 m ²	1,0	10,05 m ²
POVRŠINA ZATVORENIH PROSTORA:				P=43,22 m²
loggia	grass ploč.	3,49m ²	0,75	2,62 m ²
UKUPNO POVRŠINA STANA:				P=45,84 m²
spremište	cem. glaz.	1,62 m ²	0,75	1,22 m ²
SVEUKUPNO:				P=47,06 m²